



nocospray[®]

enhanced disinfection: simplified



user manual

I.	INTRODUCTION	4
I.1.	General information	4
I.2.	Classification / Regulation	4
I.2.1.	Warranty purpose	4
I.2.2.	Transport	4
I.2.3.	Warranty duration.....	4
I.3.	Technical characteristics	5
II.	PRECAUTIONS FOR USE.....	6
II.1.	Safety instructions.....	7
III.	DESCRIPTION	8
III.1.	NOCOSPRAY® description	8
III.2.	NOCOSPRAY® dimensions.....	9
IV.	Instructions for USE.....	9
IV.1.	Positioning of the device.....	9
IV.2.	Installation of the bottle	10
IV.3.	Diffusion duration and consumption	11
IV.4.	Functioning in « standard » mode	12
IV.5.	Using traceability function	13
IV.5.1.	Installation	14
IV.5.2.	Use	16
a)	General information	16
b)	General settings modification :	16
c)	Export records	17
V.	TROUBLESHOOTING	17
VI.	MAINTENANCE	18
VII.	EMC COMPLIANCE BOARD	18

I. INTRODUCTION

I.1. General information

This user manual describes the functioning of the NOCOSPRAY® diffuser and includes essential information to ensure the safe use of the machine.

The documentation applies to Nocospray® diffusers in their original manufacturer's condition and which have not been altered.

Review this manual before using the NOCOSPRAY® diffuser. It was written to ensure you master all functionalities.

I.2. Classification / Regulation

Electric classification : Class I

Compliant to CEM requirements according to standard 60601-1-2 (2007)

I.2.1. Warranty purpose

The warranty consists of the free replacement of parts recognized as defective by our technical services.

Damage due to abuse, misuse, negligence or overload of the device, as well as those due to customer's electrical network, power surges or faulty equipment, etc... are not covered by this warranty.

In addition, the use of products (liquids) not approved by the manufacturer makes this warranty null and void.

I.2.2. Transport

The device must be transported in its original packaging and stored in a secure, dry place.

The device travels at risk of the user: in case of damage during transport, the recipient must file a claim with the carrier before accepting delivery of the device.

I.2.3. Warranty duration

This warranty remains in effect for 1 year from the date of invoice to the original owner.

I.3. Technical characteristics

Power:	850VA	
Tension:	120V mono	
Frequency:	50 à 60 Hertz	
Nominal intensity:	4,5A	
Maximum intensity:	10A	
Compatible bottle:	1 Litre	
Weight:	6,2Kg	Package weight: 8,3Kg
Maximum room volume to be treated:	1000m ³	
Average flow of the liquid:	1000 ml/h	

Environmental conditions:

- In condition of use :
 - Temperature between 0°C and 40°C
 - Ambient humidity between 10% and 90%
 - Atmospheric pressure of 800 to 1060 hPa
- Transport and storage conditions :
 - Temperature between 0°C and 70°C
 - Ambient humidity between 10% and 95%
 - Atmospheric pressure of 700 to 1060 hPa

II. PRECAUTIONS FOR USE

The manufacturer cannot be held responsible for any material or bodily harm resulting from the abnormal or faulty use of the device, or the disregard for guidance below:



Use only with Nocospray® product



- **Modifying the machine is forbidden.**
- To avoid risk of electric shock, this device must only be connected to a supply main with protective earth.
- Make sure that electric power meets regular standards.
- Hand-held radio frequency communication devices (use of remote control) may affect other electrical equipment and devices.
- This device may only be used by professionals. According to requirements of norm NF EN 60601-1, it may cause radio interference and disturb operation of devices located close to the equipment.
- The use of accessories, transducers and parts, other than those supplied by A.M.G. Medical Inc. for internal components, may result in increased emissions or decreased performance and robustness of the device.
- The device should not be stacked on or under other equipment. In case this is not possible, check the performance of the system in the desired configuration prior to treatment.
- Only A.M.G Medical products and liquids can be used with the Nocospray®.
- Do not introduce any object or liquid in the nozzle of NOCOSPRAY®.
- Check presence of nozzle and nozzle holder (cf. n°2 §III.1) prior to use.
- **Remove the bottle of Nocolyse from NOCOSPRAY® for transportation.**
- **Any intervention must be carried out by staff trained on the system.**

II.1. Safety instructions

The device diffuses a chemical substance and makes noticeable sound, therefore it is necessary to pay attention to following recommendations.

IMPORTANT RECOMMENDATIONS



- Always consult the accompanying documents



- For indoor use only.



- Do not inhale the product



- Do not direct the spray toward an incandescent source



- Do not smoke close to the device



- Grounded connection only

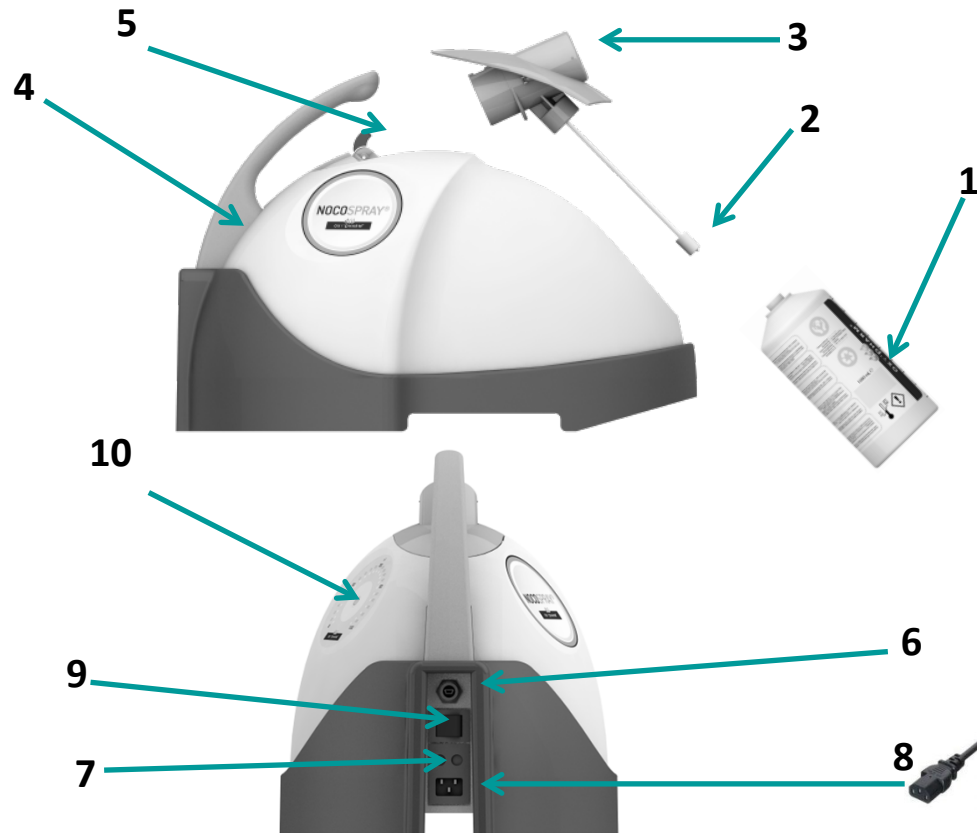


- No one should be in the room while the machine is operating
- Do not use in the presence of a flammable liquids
- Handle the machine and bottle with care
- If a person must enter the room while the machine is running or during the required contact time, they must be equipped with individual protection equipment :
 - Noise-cancelling headphones.
 - Independent respirator.
 - Personal protective equipment.

The individual should exit the room and seal it again as soon as possible.

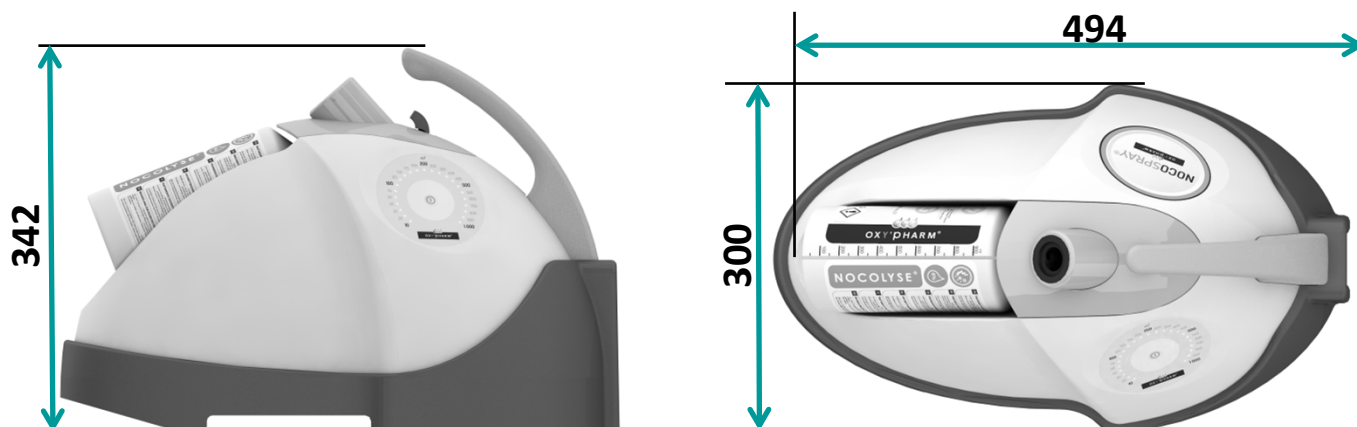
III. DESCRIPTION

III.1. NOCOSPRAY® description



1	Bottle	6	Mini USB port
2	Nozzle and nozzle holder	7	Fuses (5x20 10A T)
3	Nose of the diffuser (venturi)	8	Power cable
4	Handle	9	Power switch
5	Nozzle release button	10	Control touch pad

III.2. NOCOSPRAY® dimensions



IV. Instructions for USE

IV.1. Positioning of the device

The NOCOSPRAY® must be placed on a hard and flat surface and if possible in a corner of the room to treat.

IMPORTANT RECOMMENDATION



Before starting a cycle, check that there are no obstacles within 2 meters from the device.

IV.2. Installation of the bottle



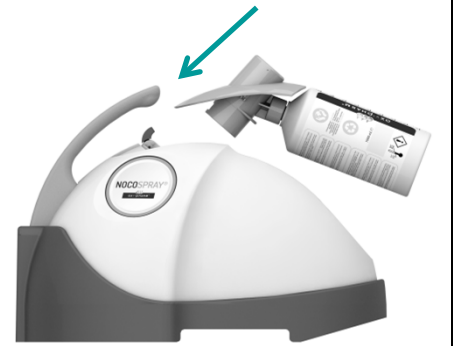
Follow instructions below to install the bottle.



Remove the diffuser nose by pressing the button



Open the bottle and screw on the nozzle.
When opening a new bottle make sure to write the date in the area provided
Do not over-tighten to avoid damaging the seal.



Place the nozzle back on the device. And press gently until you hear the «click».

**Always check if the bottle contains enough product for the treatment
(the device will not indicate whether there is sufficient liquid)**

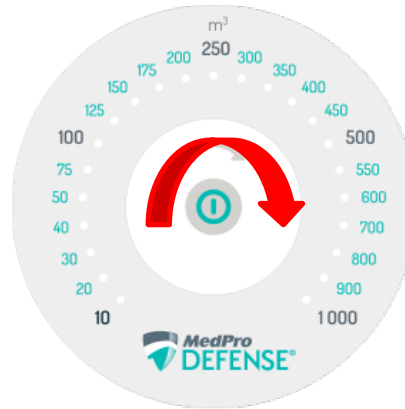
IV.3. Diffusion duration and consumption

Volume setting (m ³)	Consumption (ml)	Duration of diffusion
10	10	36 seconds
15	15	54 seconds
20	20	1 minute & 12 seconds
25	25	1 minute & 30 seconds
30	30	1 minute & 48 seconds
35	35	2 minutes & 6 seconds
40	40	2 minutes & 24 seconds
45	45	2 minutes & 42 seconds
50	50	3 minutes
62.5	62.5	3 minutes & 45 seconds
75	75	4 minutes & 30 seconds
87.5	87.5	5 minutes & 15 seconds
100	100	6 minutes
112.5	112.5	6 minutes & 45 seconds
125	125	7 minutes & 30 seconds
137.5	137.5	8 minutes & 15 seconds
150	150	9 minutes
162.5	162.5	9 minutes & 45 seconds
175	175	10 minutes & 30 seconds
187.5	187.5	11 minutes & 15 seconds
200	200	12 minutes
225	225	13 minutes & 30 seconds
250	250	15 minutes
275	275	16 minutes & 30 seconds
300	300	18 minutes
325	325	19 minutes & 30 seconds
350	350	21 minutes
375	375	22 minutes & 30 seconds
400	400	24 minutes
425	425	25 minutes & 30 seconds
450	450	27 minutes
475	475	28 minutes & 30 seconds
500	500	30 minutes
525	525	31 minutes & 30 seconds
550	550	33 minutes
575	575	34 minutes & 30 seconds
600	600	36 minutes
650	650	39 minutes
700	700	42 minutes
750	750	45 minutes
800	800	48 minutes
850	850	51 minutes
900	900	54 minutes
950	950	57 minutes
1000	1000	1 hour

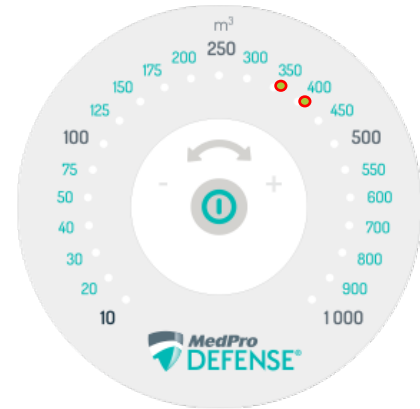
IV.4. Functioning in « standard » mode



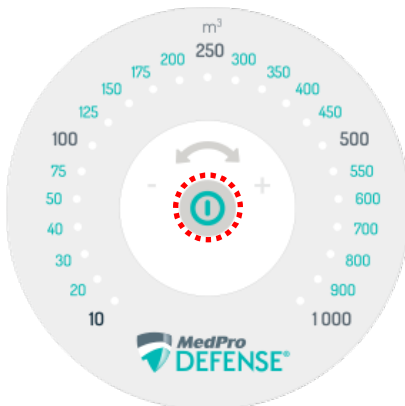
Connect the power cable and put the main switch on « I »



Select the volume by dragging your finger on the clear part of the touchpad.
(The range is between 10m³ and 1000m³)



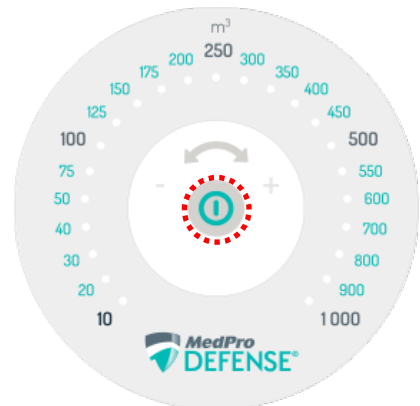
The light indicates the volume chosen, if two lights are illuminated, the selected volume is the middle point between the two values.



After selecting the volume, press and hold the start button in the middle of the touchpad to start the diffusion cycle. A beeping sound will begin.





A beeping sound will continue for 15 seconds and then the diffusion will begin. Leave and close off the room before the end of these 15 seconds.



The device can be stopped by pressing the start button again (device beeps when treatment is stopped manually).

IV.5. Using traceability function

A mini USB connector enables transferring the treatment history to a computer (see **installation of the traceability software**)

		<p>The device will not diffuse when in USB mode.</p> <p>To exit USB mode, unplug the cable from the computer</p>
<p>Plug the mini USB cable where indicated.</p>	<p>The 10m³ and 1000m³ LEDs flash and the 250m³ LED lights up.</p>	

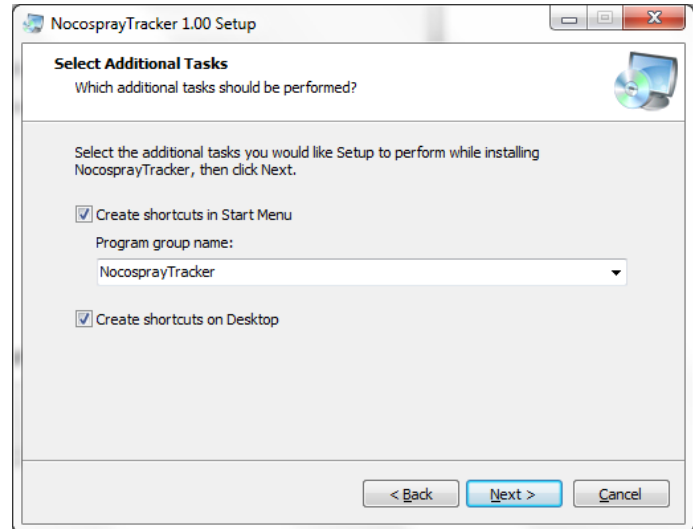
IV.5.1. Installation

Click on “NocoSprayTracker_Setup.exe” on the CD ROM or USB key supplied. Allow the program to install the software if Windows asks.

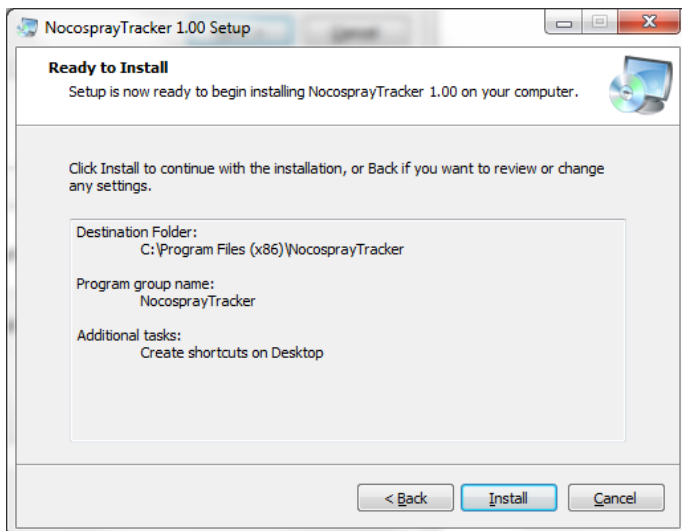
1°) Click on « Next »



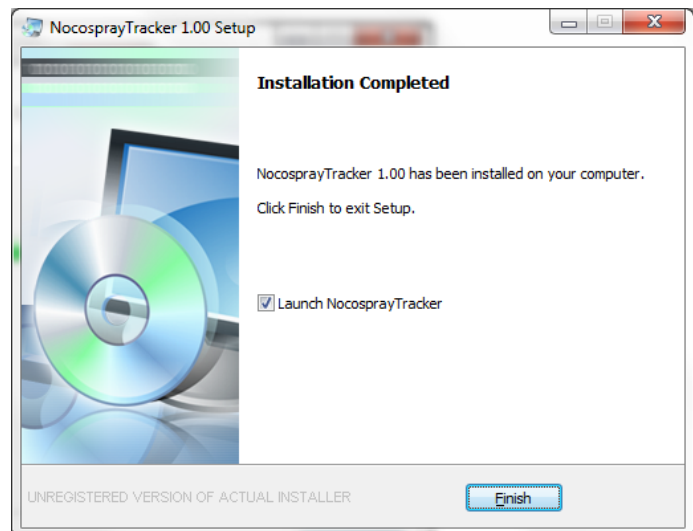
2°) Click again on « Next »



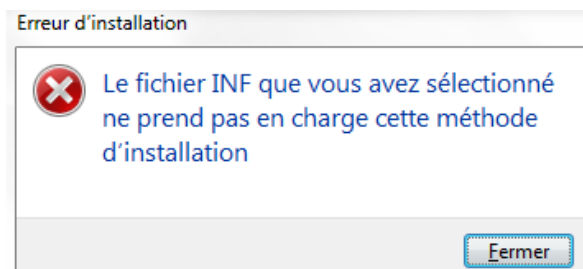
3°) Click on « Install »



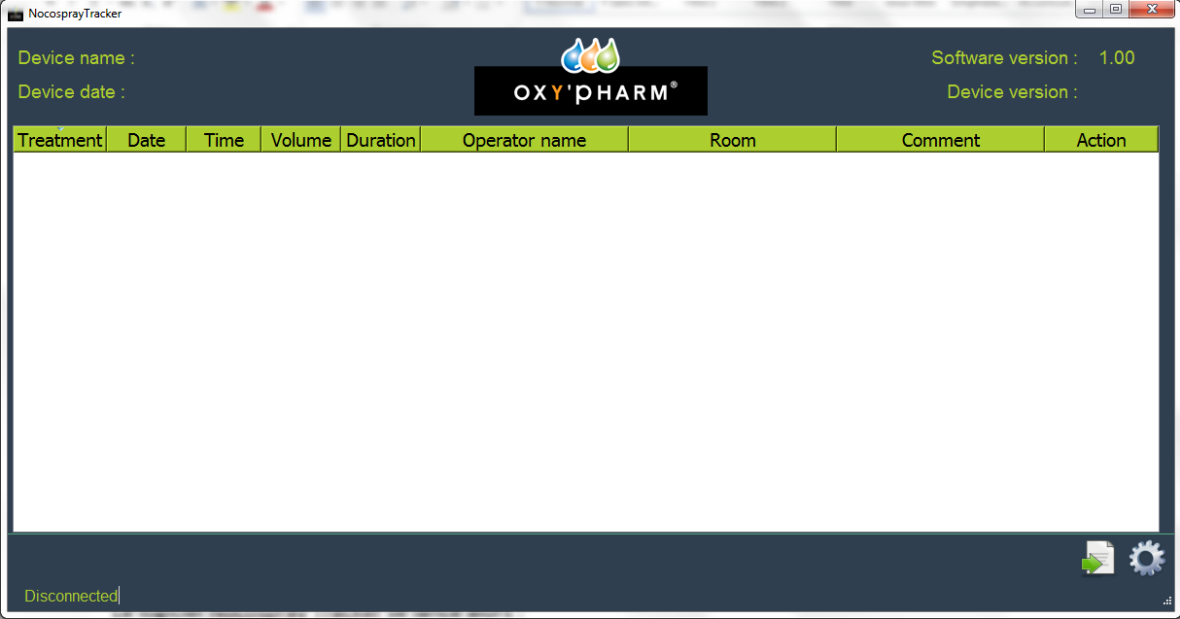
4°) Click on « Finish ».



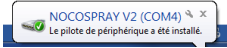
If the following window appears, click on « Fermer »



Nocospray Tracker software runs:

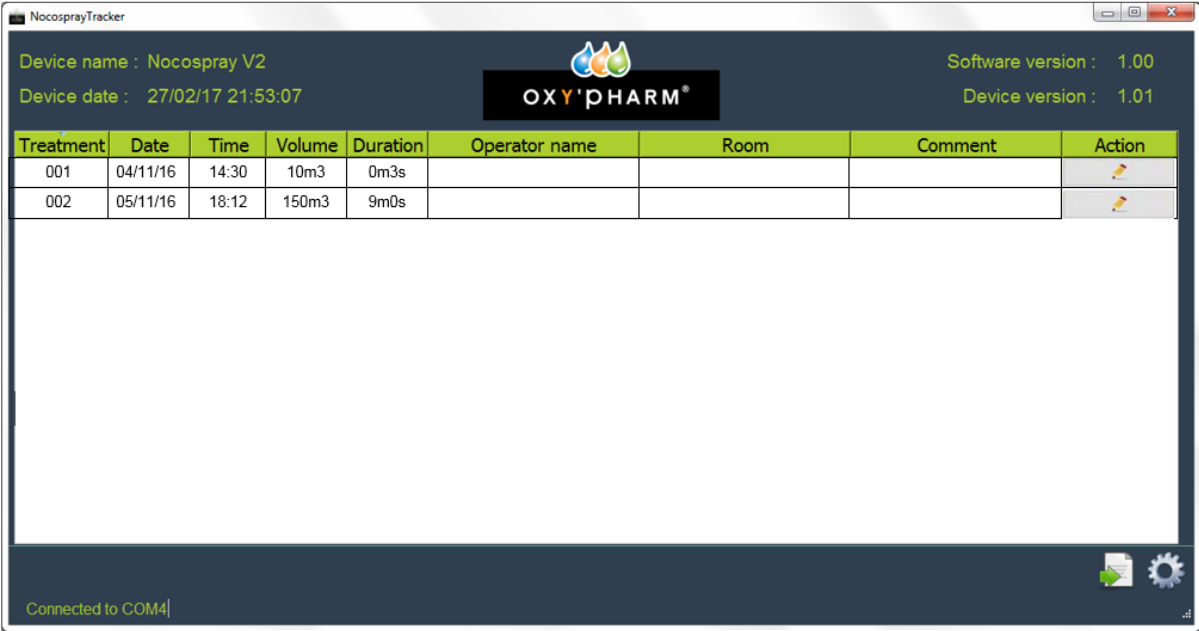


Connect Nocospray® on the USB port of your computer:
An icon on bottom right might appear to indicate that the device driver is running.



If your computer doesn't allow an automatic installation, the driver « .inf » is provided with the software, please contact your system manager.

The text “Connected to ...” shows that the Nocospray® is correctly connected



IV.5.2. Use

a) General information

Nocospray tracker software will launch automatically once installed. If it does not, it can be initiated manually.

- « Device Name »: Name of the device (editable parameter)
- « Device date »: Date and time of the device (to be set the first time – it will automatically update afterwards)
- « Software version »: Version of Nocospray Tracker software
- « Device version »: Version of the intern software of Nocospray (motherboard)

Each line indicates each treatment. It is possible to organize each treatment following its number, date, time, volume, duration, room name, operator name or comment.



« Treatment »: treatment number

« Date »: Date of the treatment

« Time »: The time of the treatment

« Volume »: Volume setting of the Nocospray

« Duration »: Duration of the treatment (this parameter is automatically calculated)

« Operator name »: Name of the operator who made the treatment.

« Room »: Name/number of the room treated

« Comment »: Other comment



: Enter parameters « Operator name », « Room » and « Comment »

WARNING: Once those parameters are saved, they cannot be modified

b) General settings modification :

This icon gives you access to the following window:

Device settings

Device Name :

Device date février, 2017

	lun.	mar.	mer.	jeu.	ven.	sam.	dim.
5	30	31	1	2	3	4	5
6	6	7	8	9	10	11	12
7	13	14	15	16	17	18	19
8	20	21	22	23	24	25	26
9	27	28	1	2	3	4	5
10	6	7	8	9	10	11	12

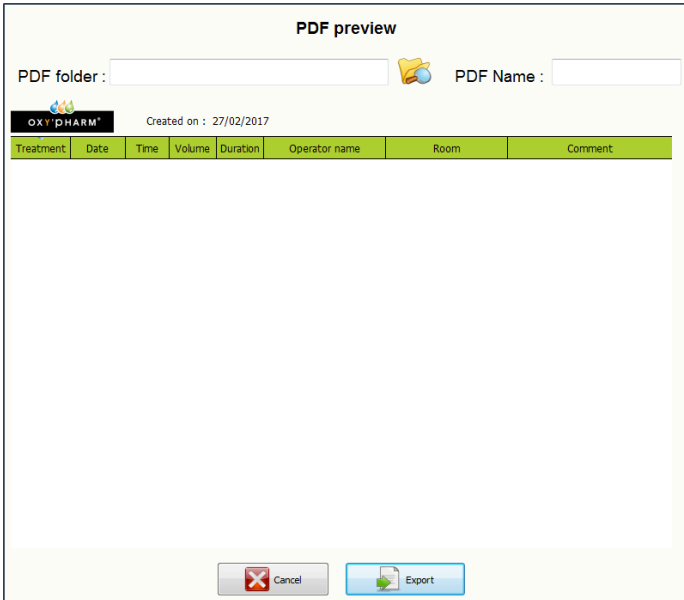
Device hour :


On this window device name « Device Name », date and hour of the device can be modified.

c) Export records



This icon enables exporting the recorded treatments to a PDF. It brings you to the following window:



Using this icon , you can choose the folder where you want to save the data (PDF file).

« PDF Name »: enter the name of the record file.

Then, click to « Export » to record the file.

V. TROUBLESHOOTING

The table below shows a list of common problems and likely solutions. If the problem persists, contact you're A.M.G. Medical representative or our Customer Service Center.



Before any intervention, switch off the device and disconnect the power cord

Failure	Resolution
The device does not switch on	<ul style="list-style-type: none"> - Check the power cable connection - Check if the switch is in « I » position. Is the red light on? - Check fuses
The device works but the consumption is incorrect	<ul style="list-style-type: none"> - Check that nozzle is attached securely and not blocked - Check if the bottle contains enough liquid
The device has fallen and has a malfunction	Contact A.M.G. Medical Customer Service Center

VI. MAINTENANCE

The NOCOSPRAY® device requires regular maintenance.



- Switch off the device before any cleaning.
- Do not use abrasive products, bleach, acetone or solvents for maintenance or cleaning operations of the device. These aggressive agents may damage the surface materials (discoloration, tasks, drips, microcracks...)
- For the cleaning of external surfaces, use a slightly damp cloth or wipes.

VII. EMC COMPLIANCE BOARD

Recommended separation distances between portable and mobile RF communications equipment and the NOCOSPRAY®.			
The NOCOSPRAY® is intended for use in an electromagnetic environment in which radiated RF disturbances are controlled. The customer or the user of the NOCOSPRAY® can help prevent electromagnetic interference by maintaining a minimum distance between portable and mobile RF communications equipment (transmitters) and the NOCOSPRAY® 2 as recommended below, according to the maximum output power of the communications equipment.			
Rated maximum output power of transmitter (W)	Separation distance according to frequency of transmitter (m)		
	150kHz to 80MHz	80MHz to 800MHz	800MHz to 2.5GHz
0.01	0.117	0.117	0.233
0.1	0.369	0.369	0.737
1	1.167	1.167	2.330
10	3.690	3.690	7.368
100	11.67	11.67	23.300

For transmitters rated at a maximum output power not listed above, the recommended separation distance d in metres (m) can be estimated using the equation applicable to the frequency of the transmitter, where P is the maximum output power rating of the transmitter in watts (W) according to the transmitter manufacturer.

NOTE 1 At 80 MHz and 800 MHz, the separation distance for the higher frequency range applies.

NOTE 2 These guidelines may not apply in all situations. Electromagnetic propagation is affected by absorption and reflection from structures, objects and people.